



## Pop-Up Adapter® / Tube Chute® Installation Instructions

*\*For additional information about the system refer to the Pop-Up® Adapter installation instructions or scan QR codes.*



Step 1: Lay the tube out on the floor. They are marked as “Curbside” and “Roadside”. Position them on the appropriate side of the trailer.



Step 2: Connect each tube to the header using the hook and loop material which is installed on each. *Note: It is important to ensure that the joined components are connected straight and without separations in the hook and loop.*

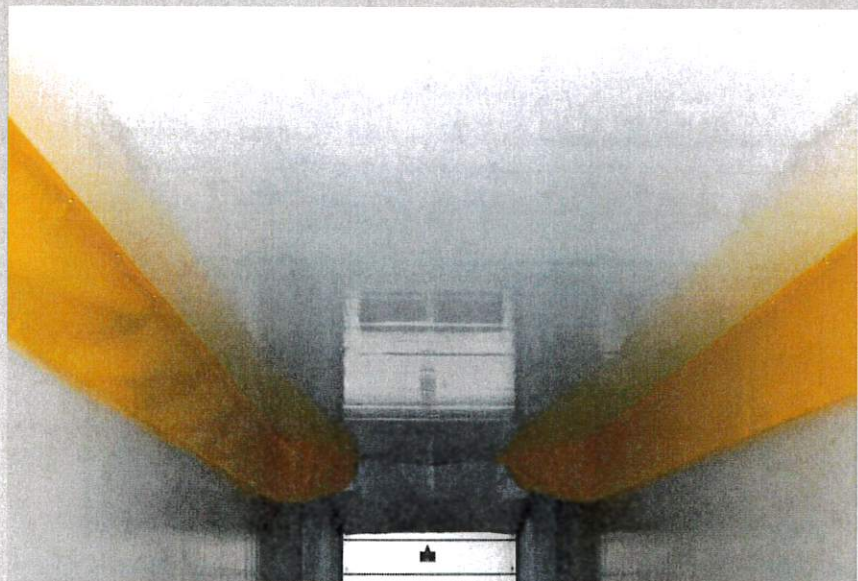


Step 3: Tensioning the tube against the header, secure the tube to the ceiling using the first grommet. Position this grommet so that it is approximately 1" – 1 ½" from the inside wall. (This is often defined by the width of the corner trim of the trailer).



Step 4: Secure the chute to the ceiling at the approximate midpoint and end of the entire length of the chute, again approximately 1" – 1 ½" from the inside wall.

Step 5: Return to the front of the chute and secure the remainder of the chute to the ceiling by positioning and secure the grommets to as to provide a smooth transition from the header to where the chute becomes a tube. This will vary by application so pre-determined measurements are not practical.







## Tube Chute Installation Instructions

Insulated Transport Products

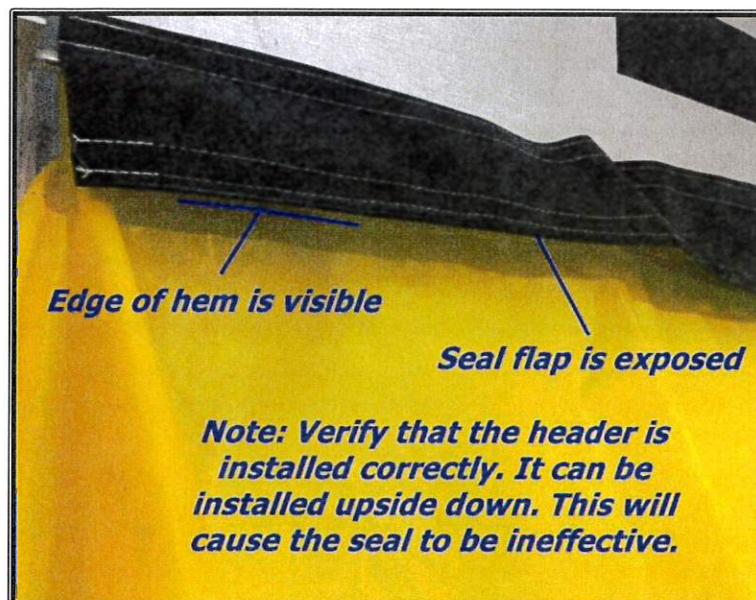
1-800-233-6180 – [www.insulatedtransportproducts.com](http://www.insulatedtransportproducts.com)

### Tube Chute Header Installation

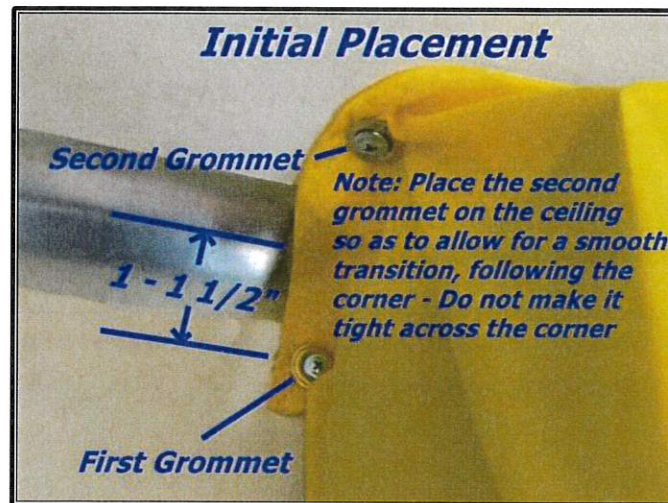
**Note: This instruction is supplemental to the Pop Up Adapter installation instructions**

During the installation of the ITP Pop Up Adapter, the instructions describe the insertion of a  $\frac{3}{4}$ " bar into a sleeve in the bottom of the header which is specially made to accept the bar. The bar is then installed to the ITP Pop Up Adapter through the use of (2) eyebolts which are placed into the ends of the  $\frac{3}{4}$ " bar. This instruction begins with the assumption that the bar, eyebolts and vertical guide rods are fully installed on the ITP Pop Up Adapter.

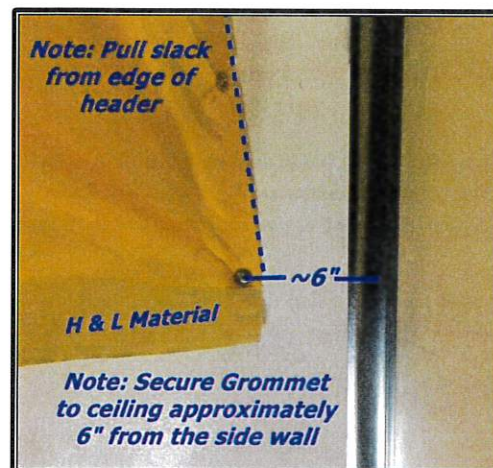
*Assembly Note – Header orientation / vinyl seal positioning: Verify that the header is positioned on the  $\frac{3}{4}$ " bar in such a way that the hem will face inside the chute assembly once completed. You can tell this by identifying the edge of the fabric – with the header hanging down as shown in the image below, ensure that the shows face will be located on the inside of the completed header assembly. This is critical to ensure that the vinyl seal will also be inside the header assembly or it will not be effective. During initial assembly, it may have a tendency to rotate under the bar and hang outside of the header assembly. Simply rotate the seal back under the bar as show. Once the other end is secured, the seal will be concealed behind the raised header. If the header is not as shown, simply flip the bar ends left to right.*



- 1) **Initial Placement:** Locate the first grommet on one of the outside edges of the header. This will be the edge of the header which is nearest the front wall of the trailer. *Note: The process will be the same for both sides – it does not matter which one you start with.* Secure this grommet to the front wall of the trailer, approximately 1 – 1 ½" from the ceiling. Secure the next grommet to the ceiling so that the header can follow the transition from the front wall to the ceiling. Repeat for the other side.



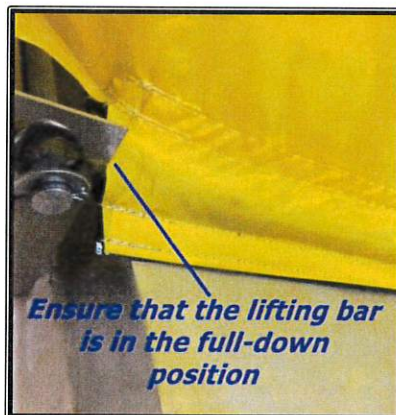
- 2) **Position last grommet:** Locate the last grommet along either outside edge. This is the grommet that will be rear-most on the header. After lightly removing the slack from that edge of the header, secure the grommet 6" from the side wall. *Note: This location is critical to the efficiency of the tube chute performance as it helps to minimize kinks as the tube chute is aligned with the side wall.* Repeat for the other side.



- 3) **Secure outside edges:** Permanently secure the remaining grommets between those placed in Step 1 and Step 2. Ensure that there is not excessive slack (over 1/2" sag) between any two of those grommets. Repeat for the other side

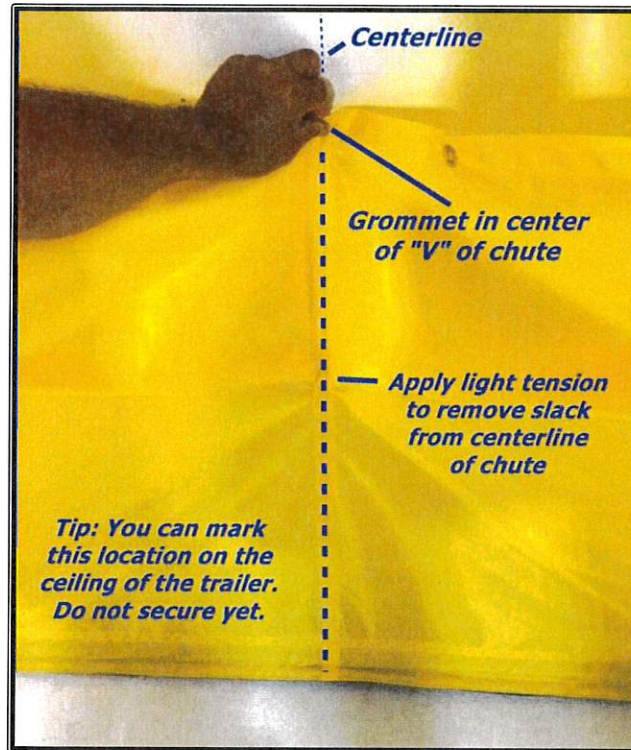


- 4) **Center Grommet Location:** *Note: Ensure that the 3/4" bar is fully lowered in the base of the Pop Up Adapter brackets (see image).*

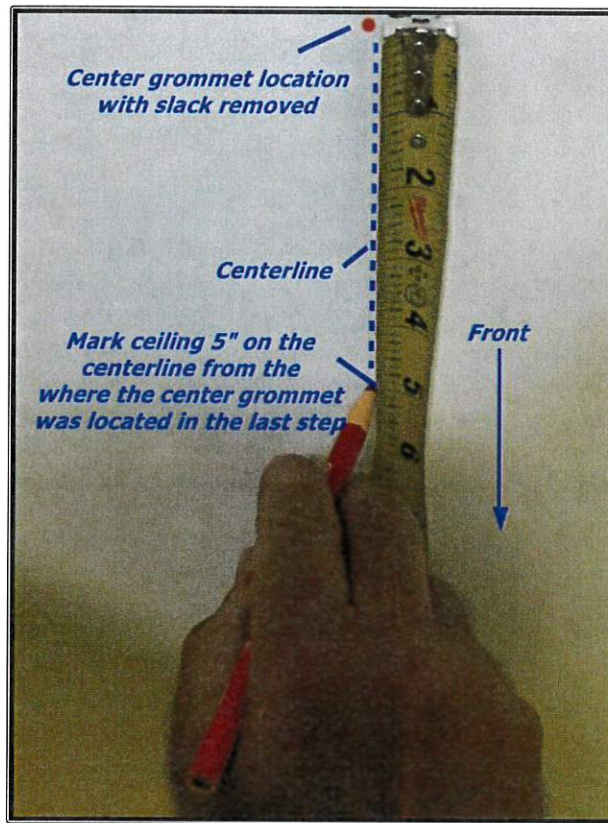




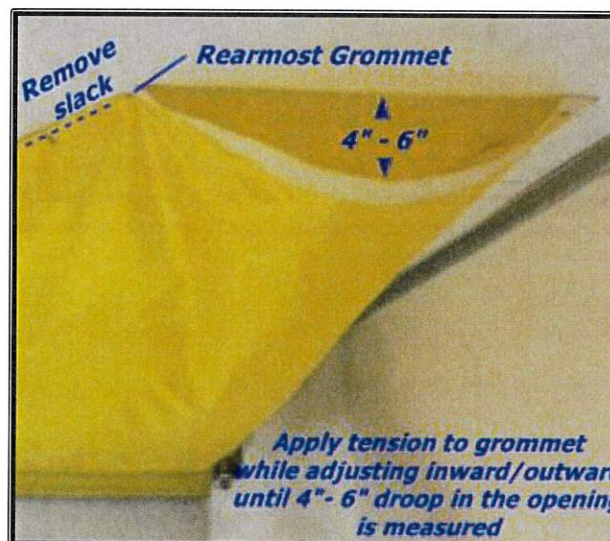
- 5) Measure the overall width of the trailer. Divide the width by 2 and record this dimension. This will be the width-wise centerline of the trailer ceiling and the first dimension to locate the grommet. Mark the centerline on the ceiling of the trailer.
- 6) Next, identify the grommet in the center of the "V" of the chute. Lifting the grommet into position, remove the slack from the chute (the slack between the grommet and the  $\frac{3}{4}$ " bar) and position it on the centerline of the ceiling. Using a temporary marker, mark the center of the grommet on the ceiling (with the slack removed).



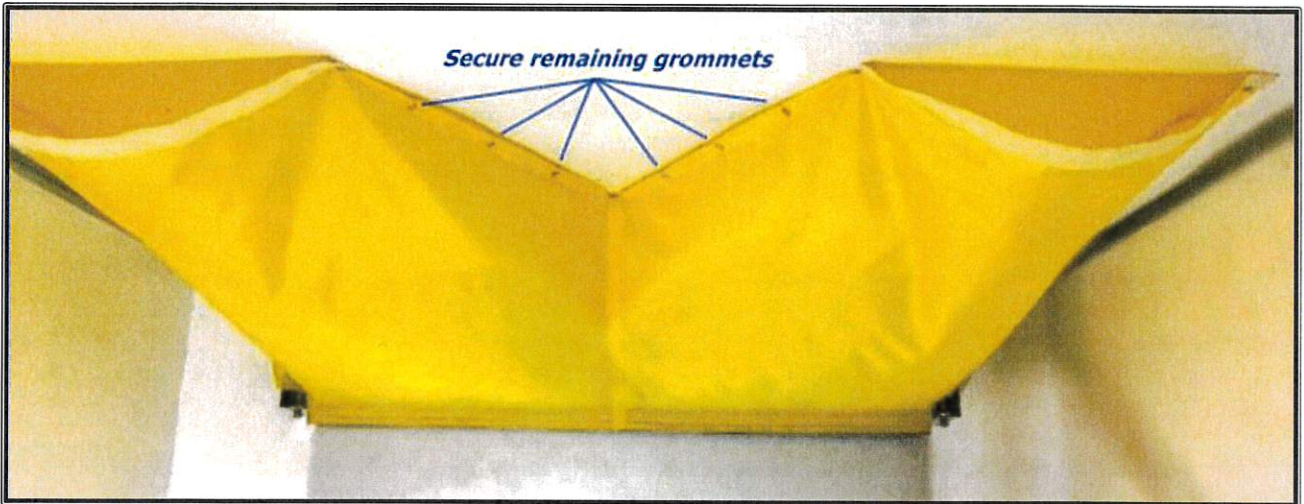
- 7) On the ceiling centerline, measure 5" towards the front of the trailer (towards the evaporator) and mark the location. Permanently secure the center grommet to the ceiling.



- 8) **Setting Droop:** Starting with either side, locate the rearmost grommet on the "V" of the header. With the slack removed from the hem of the "V", locate the rearmost grommet against the ceiling so that there is approximately 6" of droop in the rear edge (the edge with the hook and loop material). Secure grommet to that location. Repeat for the other side.



- 9) **Install remaining grommets**: Secure the remaining grommets between the center and ends of the "V" of the header.



- 10) **Return Adapter Installation Instructions**: Complete installation of the system per the adapter and chute installation instructions