

Zephyr

Installation Instructions

Note: The Zephyr installation is slightly different than other models in that it uses hardware that improves durability and security when securing to trailer walls.

Parts: Make sure you have the necessary parts to install

Ref	Description	Qty
1	Zephyr Return Air Bulkhead	1
2	Pallet Stop	2
3	Quick Release Toggle	6
4	Quick Release Spacer	6
5	Screw, Self-Tapping	2
6	Screw, Machine	4
7	Well Nut	4

3) Quick Release Toggle



4) Quick Release Spacer



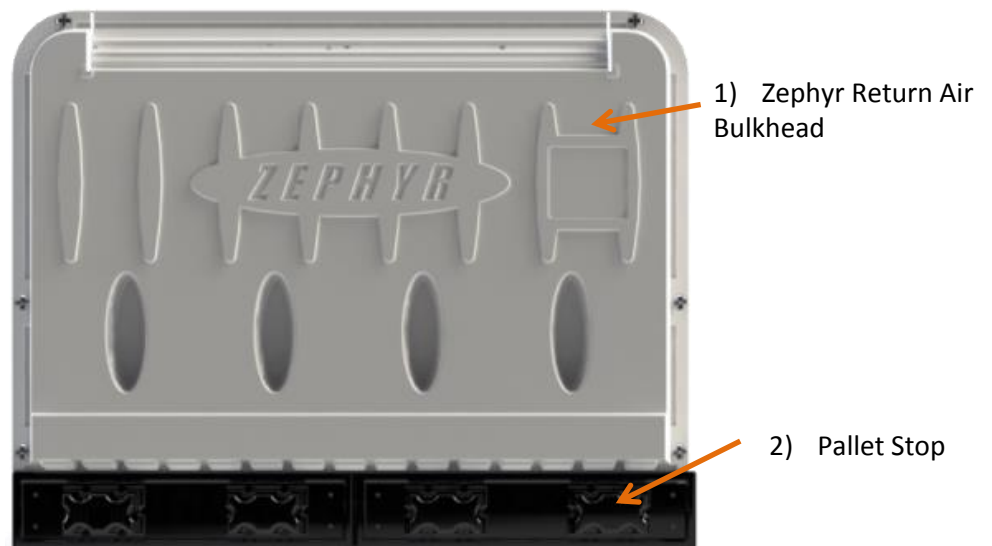
5) Screw, Self-Tapping



6) Screw, Machine



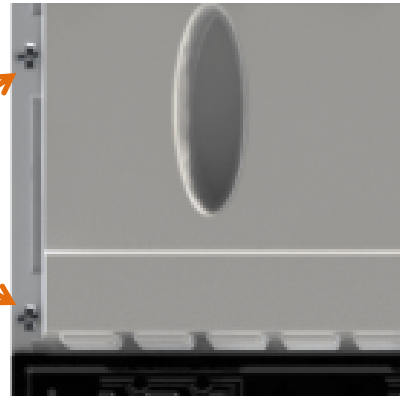
7) Well Nut



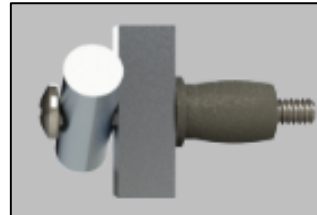
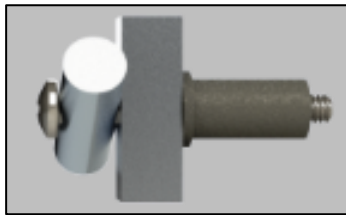
Well Nut Quick Release Retainer Preassembly-

The lower (4) quick release fasteners on the Zephyr Return Air Bulkhead use a special rubberized nut that expands as it is tightened. This allows it to remain secure in thinner materials.

The special fasteners are used on the lower (2) positions on each side of the Zephyr Return Air Bulkhead. This image shows the left side. The right uses the same fastener arrangement, totaling (4).



You can ease installation by preassembling the fasteners as shown. Make sure you do not over-tighten the screw or the well nut will begin to expand, making it difficult or impossible to insert into the mounting hole.



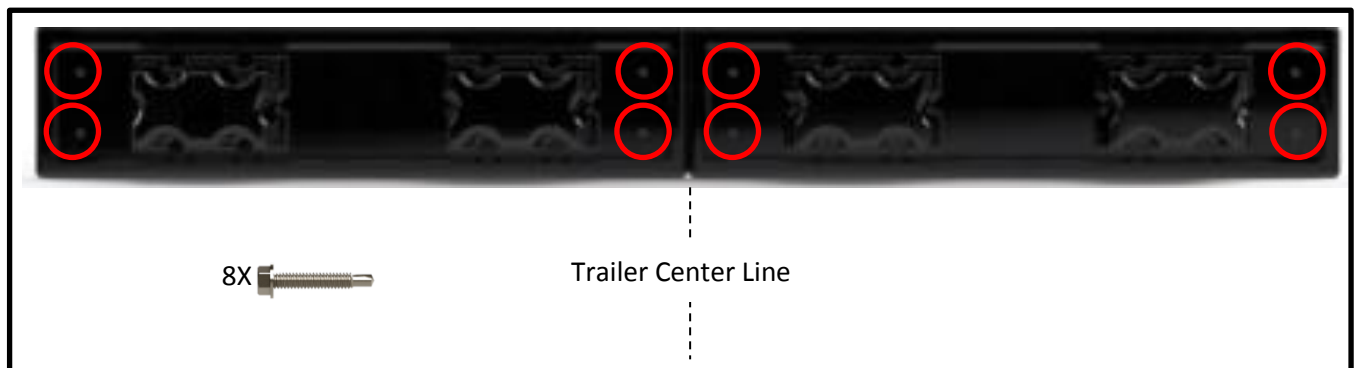
Zephyr Return Air Bulkhead Preparation-

Prior to positioning the Zephyr Return Air Bulkhead for mounting, you must first snip a connector bridge where shown below



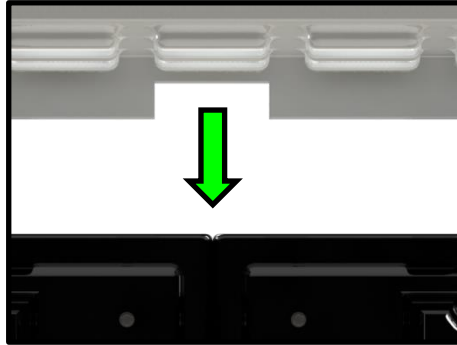
Pallet Stop Installation-

Position the pallet stops on the floor, centered in the trailer as shown. Using (8) self tapping screws, secure the pallet stops to the forward wall



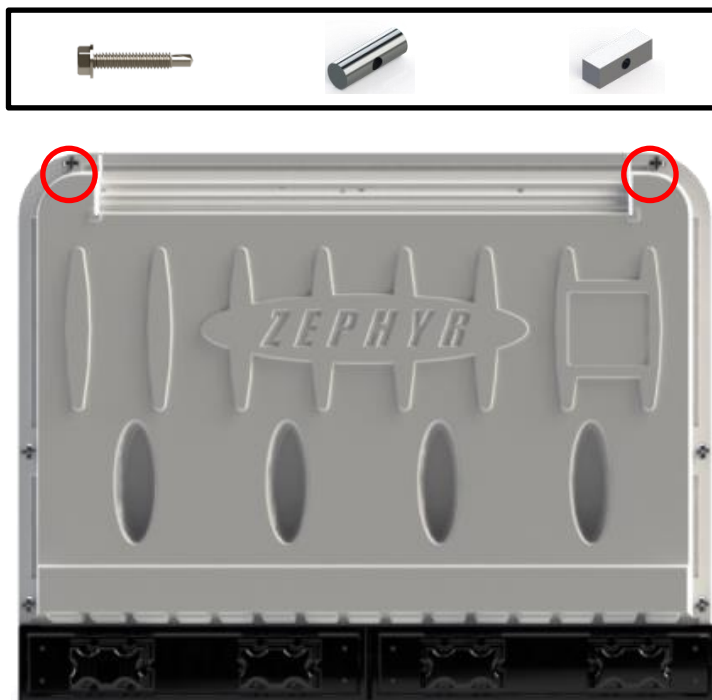
Return Air Bulkhead Installation-

Note: There is a notch at the bottom of the Zephyr Bulkhead which must be aligned as the bulkhead is positioned for installation (see below).



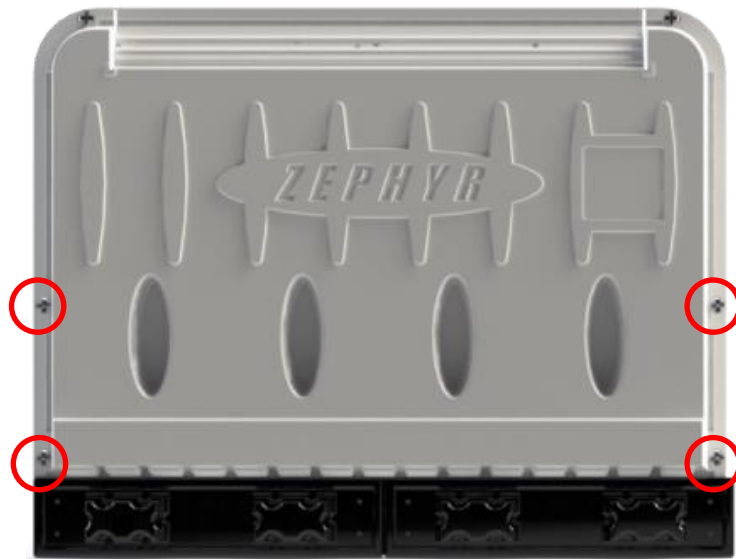
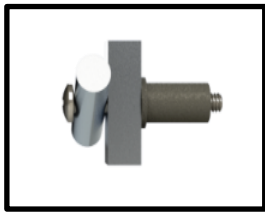
Position the Zephyr Return Air Bulkhead so that the notch (as shown above) is aligned with the center of the pallet stops and positions the bulkhead flange into the receivers at the top of the pallet stops. Press in on the flap hinge area of the return air bulkhead to properly position the upper holes.

Secure the top of the bulkhead using self-tapping screws, spacers and toggles the two upper-most slots (#1 and #2)



Note: It is recommended to drill a smaller locating hole (pilot hole) in the center of the mounting slots to provide better control of final ½" hole location.

Through the remaining (4) quick release cut-outs, locate the center of the mounting slot and drill the wall using a ½" bit. Once the holes are drilled, insert the previously assembled fasteners with the well nuts. Tighten until the toggles are as tight as desired.



Note: You can adjust the amount of force required to rotate the toggle by tightening or loosening the fastener.